



Security Solutions are our business

People Flow Control Solution

— Create a safer environment for customers and staffs —

CALL **01202 765 948**

www.southernsecurityservices.co.uk

CONTENTS

01 **Background**

02 **People Flow Control Solution**

03 **Success Cases**

Background

With the large-scale outbreak of the COVID-19 virus globally, various countries have introduced emergency measures to contain and manage the epidemiological emergency of COVID-19. Places like supermarkets, food stores, banks, etc., have strict restrictions on people's flow.

These places are facing the challenges to keep open under COVID-19.

Reports



BBC Account News Sport Reel Worklife Travel Future Culture

NEWS

Home Video World Asia UK Business Tech Science Stories Entertainment & Arts

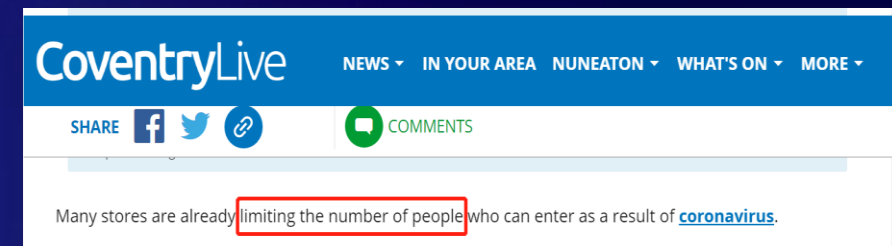
Business Market Data Global Trade Companies Entrepreneurship Technology of Business

Coronavirus: Supermarkets limit shoppers as rules tighten

By Lora Jones & Jane Wakefield
BBC News

24 March 2020

Facebook, Twitter, Email, Share



CoventryLive NEWS IN YOUR AREA NUNEATON WHAT'S ON MORE

SHARE Facebook Twitter Email COMMENTS

Many stores are already limiting the number of people who can enter as a result of coronavirus.



Sections Business

The Washington Post
Democracy Dies in Darkness

Get 1 year for \$29

Supermarkets are limiting the number of shoppers at one time. Temperature checks and delivery-only stores may follow.



Singapore

COVID-19: NEA to conduct crowd management trial at Serangoon Garden market, delays expected



A Google Street View of Serangoon Garden Market and Food Centre.

SINGAPORE: There may be queues and delays at Serangoon Garden Market this weekend during the morning peak hour, as the National Environment Agency (NEA) starts a trial to study how crowd management can be conducted in a market setting.



MENU EYEWITNESS NEWS 3 NEWS WEATHER TRAFFIC MEDICAL ROUNDS BETTER VIDEOS

Grocery stores limit number of customers

Kevin Hogan, Rob Polansky

Posted 11 hrs ago

CONTENTS

01 **Background**

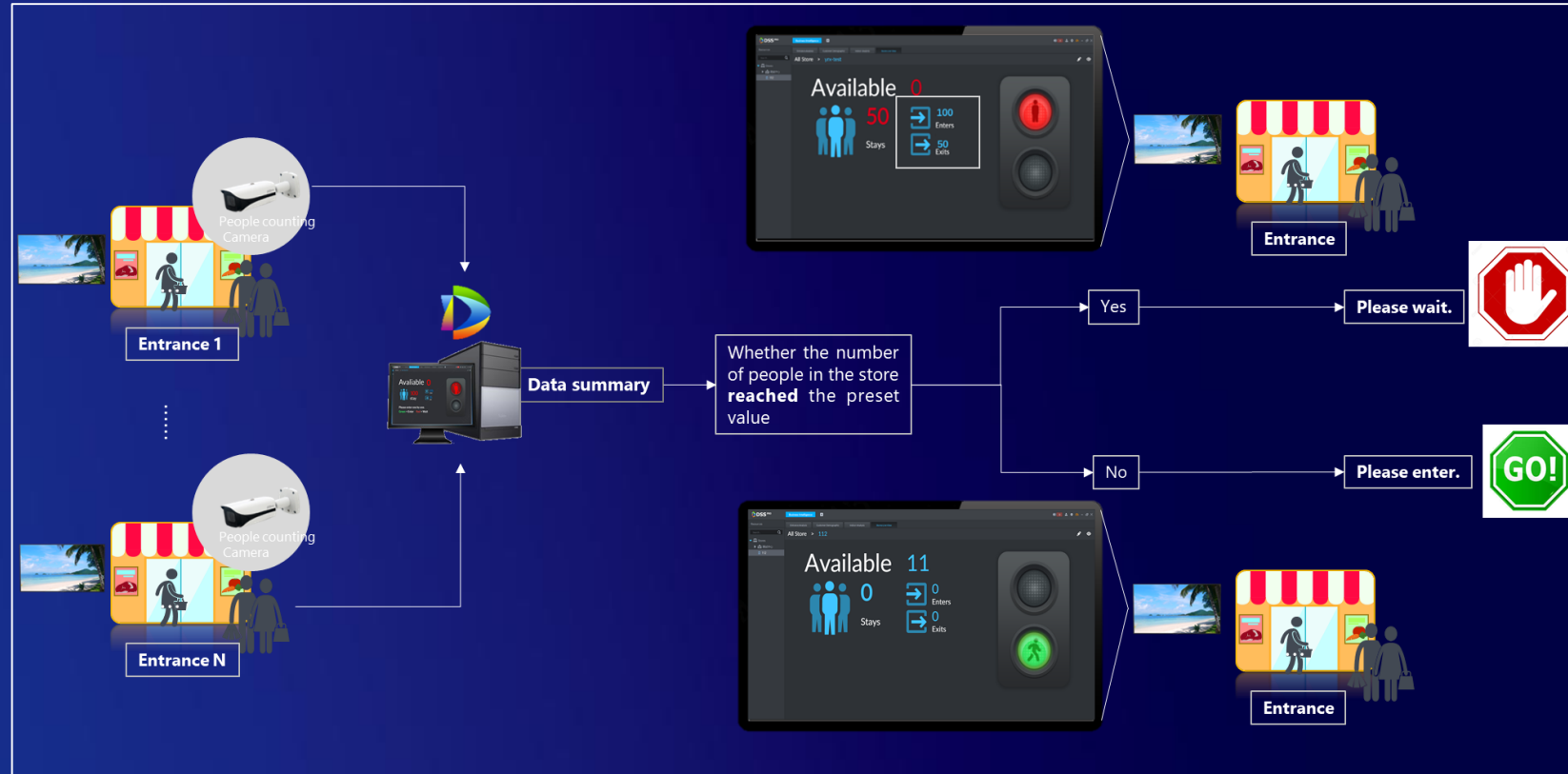
02 **People Flow Control Solution**

03 **Success Cases**

Solution Overview

How many people are there in your store?

$$78+1-5+1+1-7=???$$



Traditional Way

People Flow Control Solution

Powerful VMS — DSS Express

The screenshot displays the DSS Express software interface. At the top, the title bar shows 'DSS Express' and the active window is 'Flow Analysis'. Below the title bar, there are navigation tabs for 'Config' and 'Device'. The main content area is divided into two sections. On the left, there are statistics: 'Available 5' (with a large blue '5'), '0 Stays' (with an icon of three people and a large blue '0'), '0 Enters' (with an icon of an arrow pointing right into a box and a large blue '0'), and '0 Exits' (with an icon of an arrow pointing right out of a box and a large blue '0'). Below these statistics, the text 'Welcome to Dahua Office' is displayed in red. On the right, there is a camera view showing a green illuminated pedestrian icon on a circular display, indicating a detected person.

DSS Express

Flow Analysis

Config

Device

Available 5

0 Stays

0 Enters

0 Exits

Welcome to Dahua Office

Solution Topology | Single Entrance/Exit

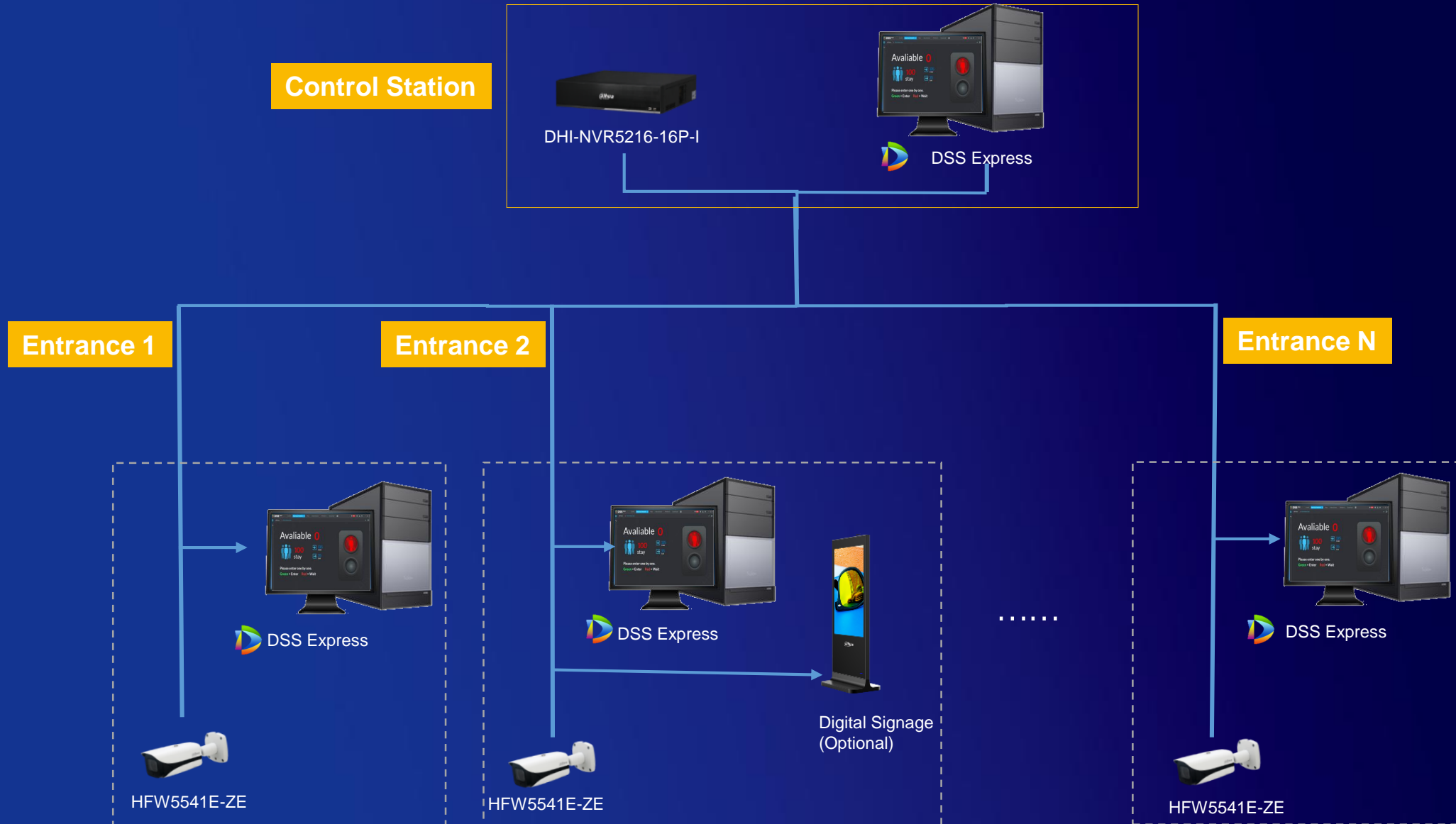


Economic Solution



Professional Solution

Solution Topology | Multi-Entrances/Exits



Solution Values



Regulation Compliance

Help to meet the requirement of the latest government regulation to limit the number of shoppers



Reduce the risk of infection

By strictly limiting the number of shoppers, the risk of infection can be reduced for customers and staffs



High Accuracy

People counting accuracy up to **98%**



Real-time Alarm

Stop customer from entering when exceeds the preset value



Flexible to Deploy

Easy installation and flexible deployment

Application scenarios

Supermarket



Food store and
Grocery store



Pharmacy



Government agency



Bank



Post Office

And Other places where people gather.

CONTENTS

01 **Background**

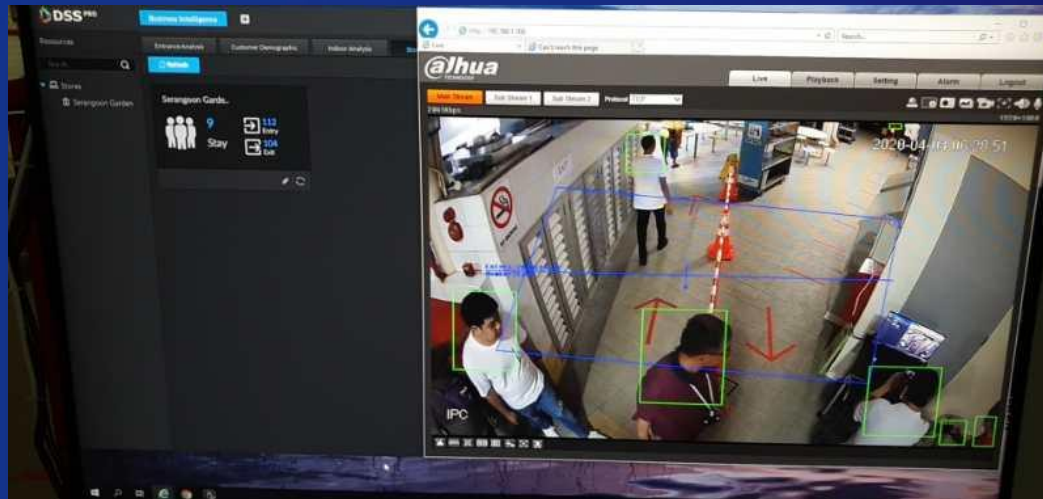
02 **People flow control solution**

03 **Success cases**

Success Cases



On April 4, NEA conducted a trial operation of crowd management at the Serangoon Garden Market in Singapore. In order to avoid the spread of virus, the number of people in this market must always less than 130. Dahua customer flow control solution helps to meet the requirement. When the number of people entering reaches the preset value, it'll give a warning message and remind customers to wait.



■ Serangoon Garden market in Singapore



Security Solutions are our business